

# Quick Start Guide


## (6-pages)





The following instructions are 100% required. You **WILL** destroy your account if you do not follow the guidelines completely. For support or to purchase more stealth accounts, head to @ [StealthAccts.com](https://StealthAccts.com)



## STEALTH ACCOUNTS

1. Choose your package

 "All listed packages include a confirmed eBay & PayPal seller account, login details, credit card used for verification, physical phone (shipped to you at your request) and the 'Getting Started' guide. Your order comes with a 30-day Guarantee against MC999 suspension."

Choose Your Package						
Only Show: COUNTRY:UK COUNTRY:US SERVICE:EBAY Show All						
Account	Country	Selling Limits	Creation Date	Price	People Inquired	Order Status
 eBay + PayPal by StealthAccts	 UK	1000/£10000+ No Receiving Limits	03-02-2017	£267	Inquired 	Add to Cart 

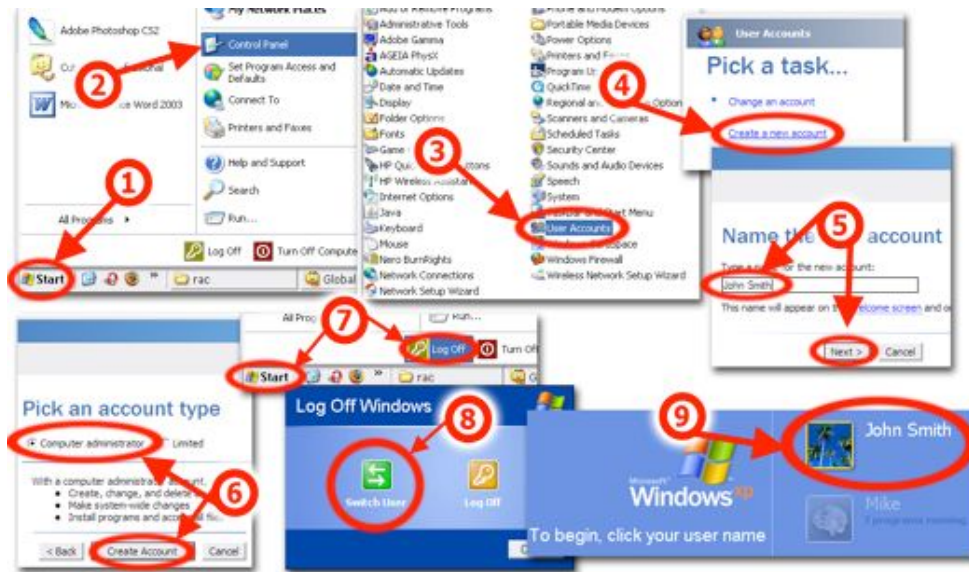
With any new account the **FIRST** thing you want to do is **establish device trust** before listing any items or making account changes. The reason for that is when you first login to a purchased account (without browser cookies intact), eBay and PayPal will **NOT** trust your device. As a result if you make any major changes to your account or list items, your account may be limited pending further verification.

It's like this because PayPal and eBay suspect you are not allowed to access the account and as a result will place increased scrutiny on any actions you take UNTIL trust can be established. That makes sense, right? The solution is to establish trust first and I'll show you how to do that in the next steps.

**\*\* Three Steps to Success \*\***

## Step 1: New User Account + US IP Address

Create a new User Account on your device (your computer) and change your local IP address. ONLY when you're on a new user account and your IP address has changed, should you login to your account (the first 24 hours just login to your account and log back out, do not list yet).



A new 'User Account' gives you a clean slate to work with (no browser cookies for eBay or PayPal to link to) and a new US IP address prevents any accidental account linkage by IP.

If you're not in the US or you do not want to use your own IP address we recommend [these guys](#) for residential proxies. It's the only service which allows the settings needed for a successful account. Once you purchase premium residential proxies, you'll want to select from dashboard settings: **Country: United States; Sticky IP to Yes and 30 minutes; ISP selection and select any US based ISP.** You must use the same ISP at all times. Location of IP does not matter as long as it's in the US.

**Can I use a Fresh IP?** Until your first item is sold, we do not recommend using a FRESH or dedicated IP. Simply change your local IP address. You must have a US based IP address. If after the first sale you want to use a dedicated IP, we recommend [these guys](#).

*If that just flew over your head, just change your local IP address and you're set.*

## Step 2: Establish Device Trust

Once you are on your new 'user account' on your device and you have a US residential IP address, next you may login to your Gmail, eBay and PayPal account.

**Note:** Do NOT login to accounts until you have created a new user account on your device and you have a clean US IP address.

To establish trust with eBay, the first day you'll want to browse and watch items only. **This is NOT a time to list items or bid on items or make any account changes.** If you do that you WILL have problems. This is extremely important. You'll want to browse and watch multiple items. The idea here is to build up a positive history of logins to your account.

**Note:** The goal is to prep your accounts by logging into them a couple days in a row without making account changes. This tells eBay and PayPal to trust your device. This is especially important before making any major account changes.

**A quick note on account changes:** Do not make ANY account changes until 90-days from the first sale. You need a solid history of logins before you can safely change passwords or any account details. NEVER clear the history on your browser, don't reject cookies, and don't run ccleaner. **Cookies = Trust.**

**Adding a Return Address:** You are allowed to add a return address, just don't change the registration address for at least 90 days after your 1st sale. More on this below.

**Adding your Bank Account:** When adding your bank account to PayPal (for withdraws), keep your stealth name as the default name listed. Do not alter the name listed on PayPal, otherwise you could risk your account being limited. The bank account you add must not have previously been used with another PayPal account. You can typically add your bank account 1 week after first logging into PayPal. You'll want to have a solid history of logins to PayPal before adding banking details.

## Step 3: List Items SLOWLY

It is important to list an item for sale and sell it in the first week of account ownership. We recommend logging into your account, waiting 48-72 hours and then listing an item. We suggest selling a low-risk item with tracking. Item should be used and low-risk. Again, do not make any account changes at this time. The first item sale is most important. **DO NOT LIST ITEMS WITH MULTIPLE QUANTITIES FOR 90-DAYS.** This will suspend your account instantly.

### Suggested Listing Schedule..

The key to success is starting SLOW, starting with only ONE low-risk item. What is low risk? Something CHEAP and USED - sporting goods, clothing, books, and toys work very well. Take a loss if necessary, just get it sold and ship quickly.

After the first sale, increase listed items weekly. We recommend low-risk, auction style for as long as possible (**NO ITEMS WITH MULTIPLE QUANTITIES**). Gradually mix in higher-risk items and work your way up to regular selling. The goal is to survive past 90 days - the probationary period. This means growth cannot explode.

### Based On Your Current Selling Limits...

1. **10/1000:** Increase weekly listings by 2 (1,3,5...) for the first month, then 3 the next month, then 4 after that.
2. **50/5000:** Increase weekly listings by 4 (1,5,9...) for the first month, then 6 the next month, then 8 after that.
3. **1000/25000:** Increase weekly by 6 (1,7,13...) for the first month, then 12 the next month, then 24 after that.

**WARNING!!** The recommended selling limit for the first month is up to \$500, the second month \$1000 and the third month \$1500. This is important during the first 90-days, again this period is the probation period for new accounts and any dollar amount above this MAY lead to premature limits on your account.

# *Follow these rules!*

**Rule 1: Avoid Listing High-Risk (Expensive) Items:** You want to think and act like a new user.. that means staying away from high-end electronics or other high-risk items in the beginning (it's a red flag for new accounts). Start off by listing 1-2 low risk items such as used clothing, books or toys. As your account ages you can list more items. You assume full responsibility by listing high-risk items. Work them in slowly and gradually.

**Rule 2: Avoid Shoddy Merchandise:** Do not list shoddy or low quality items. You want low risk items, not low quality.

**Rule 3: Avoid Slow Shipping:** Get those items sold and shipped off quickly. That means you don't want to be drop-shipping items if at all possible.

**Rule 4: Provide Top Notch Customer Service:** Keep your customers HAPPY! Don't argue with customers or become unprofessional. Always go above and beyond to keep your account in the green.

**Rule 5: Avoid Stock Images:** NEVER use stock photos for your items. Use original photos from your camera or phone, and wipe the EXIF data.

**Rule 6: NEVER Duplicate Listings Between Accounts:** Every account must have unique titles, descriptions, AND pictures. One of the easiest ways for eBay to link an account is by duplicate listings.. don't do it!

**Rule 7: NEVER sell ANY digital items, and never buy eBooks or recipes for quick feedback.** This is THE quickest way to kill accounts. NEVER buy cheap auction items with the balance in your PayPal. Ebay has started killing accounts that do this as well.

**Rule 8: NEVER reuse any old information on this new account.** ANY information shared with a suspended account will suspend this one!

**Rule 9: NEVER change ANY account info until 90 days after the first sale.** You need a solid history of logins to change passwords or any account info.

**Rule 10: NEVER clear the history on your browser,** don't reject cookies, and don't run CCleaner. Cookies = Trust.

**Rule 11: When withdrawing funds;** limit your withdraws to max \$500 daily. Withdrawing too much in a short period of time can trigger an account review.

## That's easy enough, right?

In a nutshell, you want to provide top notch customer service, ship items out quickly, write descriptive product listings with high quality UNIQUE images and maximize your selling limits while being mindful of avoiding high risk items and or listing too quickly. The first 2-3 months are an especially trying period for new accounts. Any little thing you do could potentially put your account at risk for suspension. Follow these rules as closely as possible for the best results.

**\*For the FULL guide on how to protect your account you'll want to read [eBay Stealth](#).**

**Note:** If you're worried about returns going to the wrong address, use a 3rd party shipping service like stamps.com or ShipStation. Use "Shipping Dept" as the name on labels. **You are allowed to add a return address, just don't change the registration address for at least 90 days after your 1st sale.** To add a return address, go to the My eBay Page and click "Account", then on the left side click "addresses"... on the "Primary return address:" add your returns address. Make sure the address you are going to use has not been used with eBay/PayPal previously. We recommend UPS Store Box, they accept all packages from all carriers.

As you follow these rules, your selling limits will naturally increase, PayPal holds will drop off and your ability to list normal (higher-risk) items will increase. I understand that you may want to jump right back into selling without restrictions but eBay will shut you down in a heartbeat if they feel you're a risk. Take it slow. Spread out your sales. And you will be successful.

Please reread this guide and understand it entirely. You must follow the steps to ensure account survival. If you have any additional questions, feel free to contact us.

[StealthAccts.com](http://StealthAccts.com)